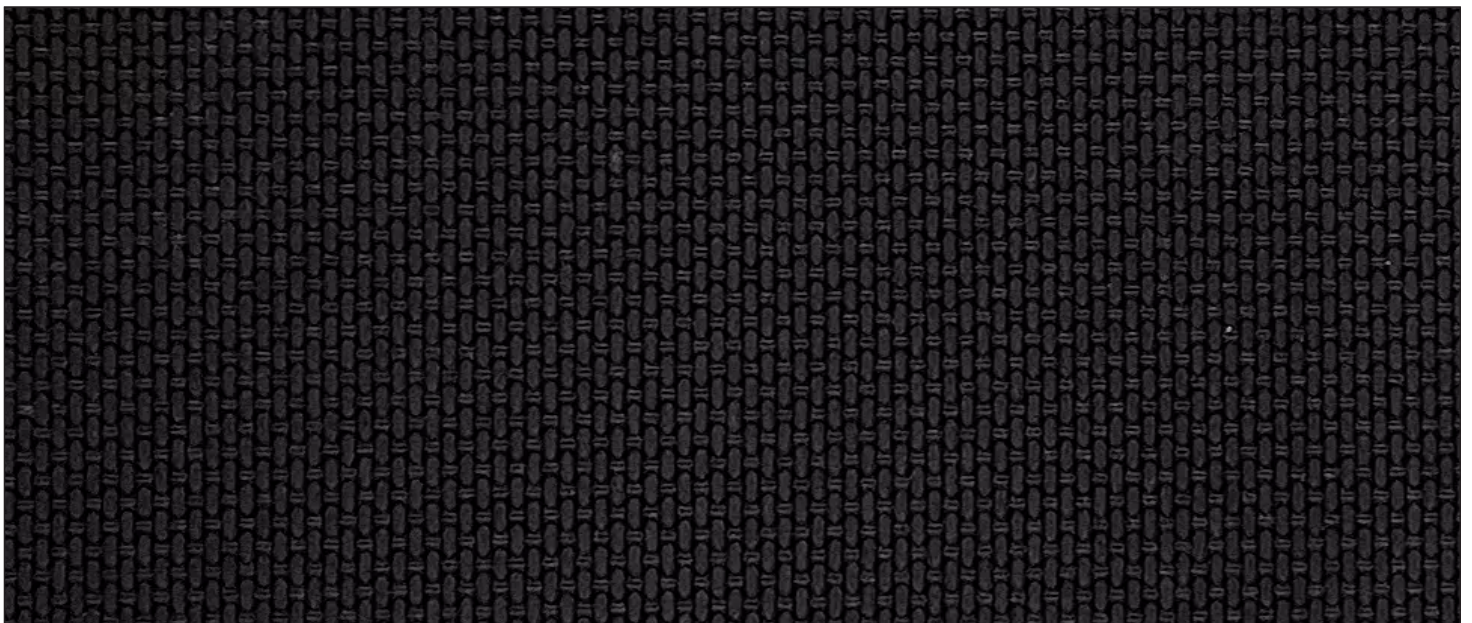
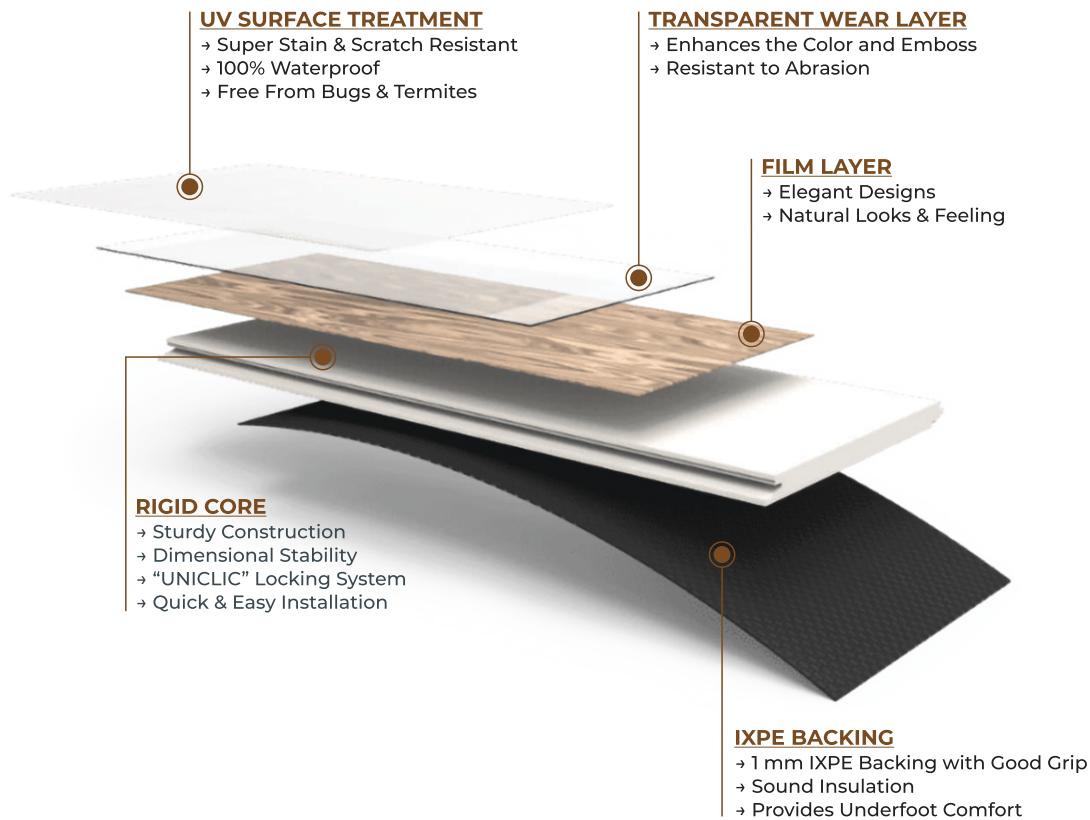


UNILOCK

UNICLICK 430





BACKING - IXPE



UNI-113



UNI-114



UNI-115



UNI-117



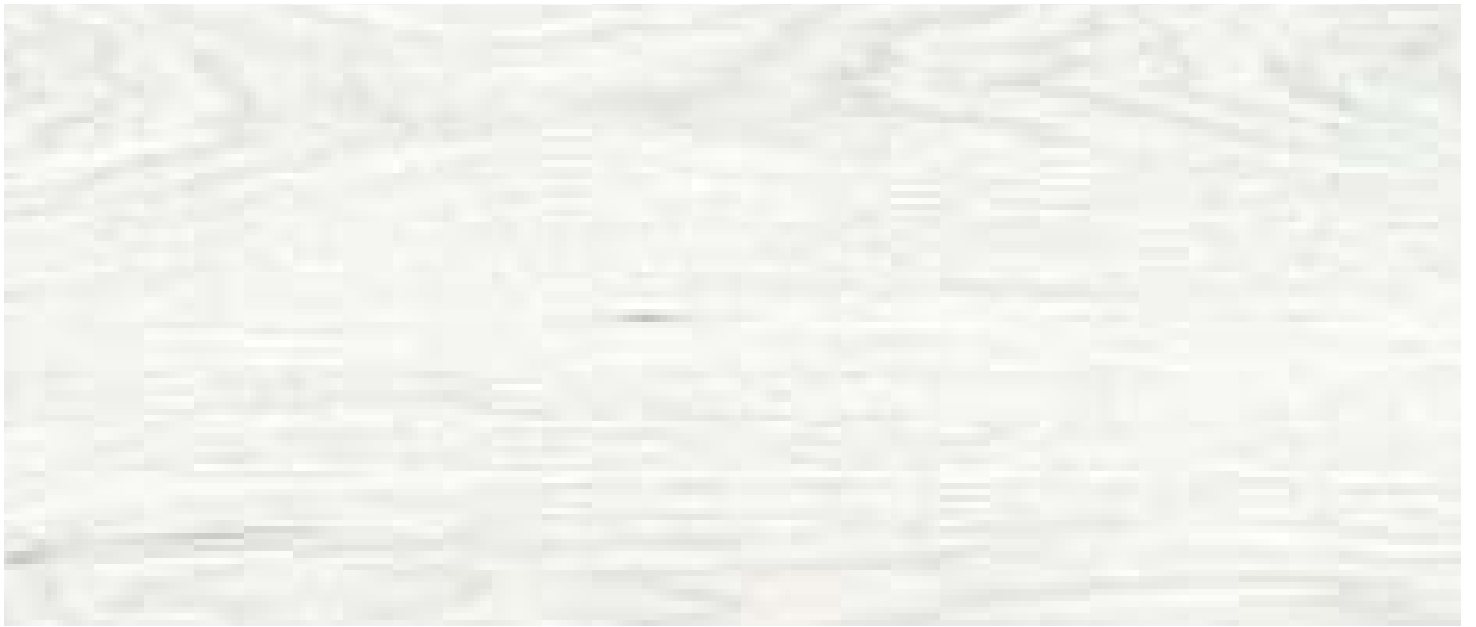
UNI-118



UNI-119



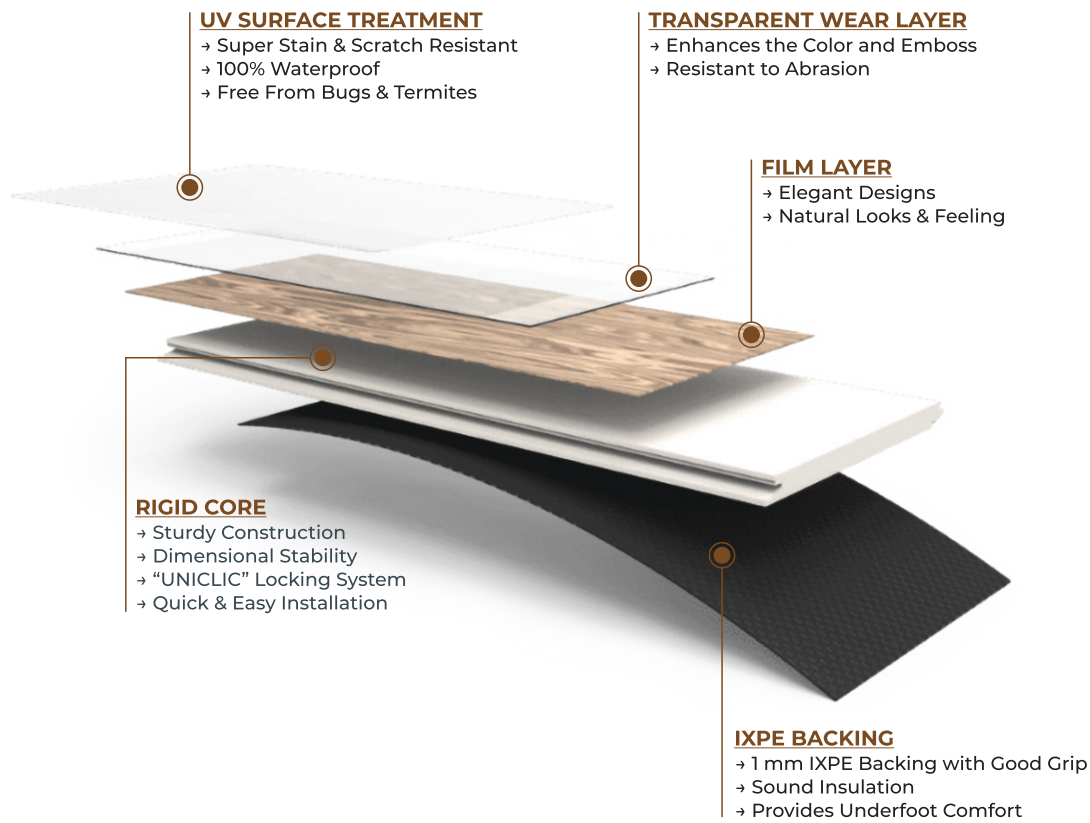
UNI-111



UNI-112



UNI-116



CHARACTERISTICS	STANDARD	RESULT
LENGTH	ASTM F3261	1220mm, ±0.4, PASS
WIDTH	ASTM F3261	181mm, ±0.4, PASS
TOTAL THICKNESS	ASTM F3261	±5.0mm (4.0mm+1.0 mm IXPE)
CURLING	ISO 23999	MM ≤ 2.0, PASS
SQUARENESS	ASTM F3261	MM ≤ 0.25, PASS
DIMENSIONAL STABILITY	ISO 23999	% ≤ 0.2, PASS
LOCKING STRENGTH	ISO 24334	Kn/m ≥ 2.5, PASS
PEEL STRENGTH	INTERNAL	N/mm ≥ 90, PASS
EMBOSS DEPTH	ASTM F 373	As per emboss,PASS
RESIDUAL INDENTATION	ASTM F1914	MM ≤ 0.18, PASS
SCRATCH RESISTANCE	EN 438-2	Grade ≥ 2, PASS
THICKNESS WITH IXPE	ASTM F386	MM ± 0.1, PASS
PRINT LAYER THICKNESS	ASTM F386	MM 0.01, PASS
WEAR LAYER THICKNESS	ASTM F386	MM < 0.03, PASS
LARGE BALL IMPACT	EN 13329	CLASS 34 (≥ 1600), PASS
DENSITY OF SPC PRODUCT	ASTM D792	G/CC 1.9 - 2.0, PASS
CROSS HATCH ADHESION TEST	ASTM D3359	RATING 5B, PASS
GLOSS VALUE	ASTM D 523	EU 6 ± 2, Pass
CASTOR CHAIR	ISO 4918	CYCLE 25000, Pass